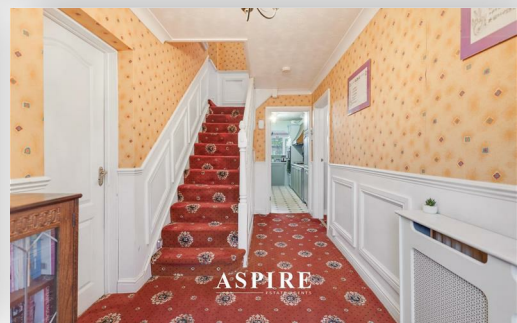


To arrange a viewing contact us  
today on 01268 777400



ASPIRE

ASPIRE  
ESTATE AGENTS



## Englefield Close, Hockley Offers over £550,000

This substantial five-bedroom detached family home represents one of the largest properties in the area for its price point, offering exceptional space, versatility and value within a quiet cul-de-sac in the heart of sought-after Hawkwell Village — an ideal setting for family living.

Perfect for a growing or expanding family, the home provides generous and flexible accommodation throughout. The ground floor features four well-proportioned reception rooms, including a lounge, dining room, sitting room and additional family room, creating excellent space for both entertaining and everyday living. Whether working from home, hosting guests or accommodating a busy household, the layout offers adaptability to suit a variety of needs.

A welcoming entrance hall leads to a well-appointed kitchen, separate utility room and convenient downstairs WC. Upstairs, the property continues to impress with five bedrooms, a family bathroom and an additional WC, ensuring practicality and comfort for modern family life.

While the home may benefit from modernisation in certain areas, it presents a fantastic opportunity for buyers to put their own stamp on a substantial property in a prime village location. With the vendors currently making adjustments, it offers exciting potential for those looking to personalise, enhance and add long-term value.

Externally, the property continues to deliver. The ample driveway provides extensive off-street parking and includes an EV charging point, while the garage offers useful additional storage space. The rear garden is a particular highlight — private and unoverlooked, complete with a pond and generous outdoor space, creating a peaceful retreat ideal for relaxing, entertaining or family enjoyment.

The location is equally appealing. Positioned within easy reach of Hockley and Rochford, both offering railway stations and a range of shopping facilities, the home also benefits from convenient access to the A127 and Southend A

[www.aspireestateagents.co.uk](http://www.aspireestateagents.co.uk)

**ENTRANCE HALL**

**LOUNGE**

**DINING AREA**

**SITTING AREA**

**KITCHEN**

**UTILITY**

**WC**

**LEAN TO**

**LANDING**

**BED 1**

**BED 2**

**BED 3**

**WC**

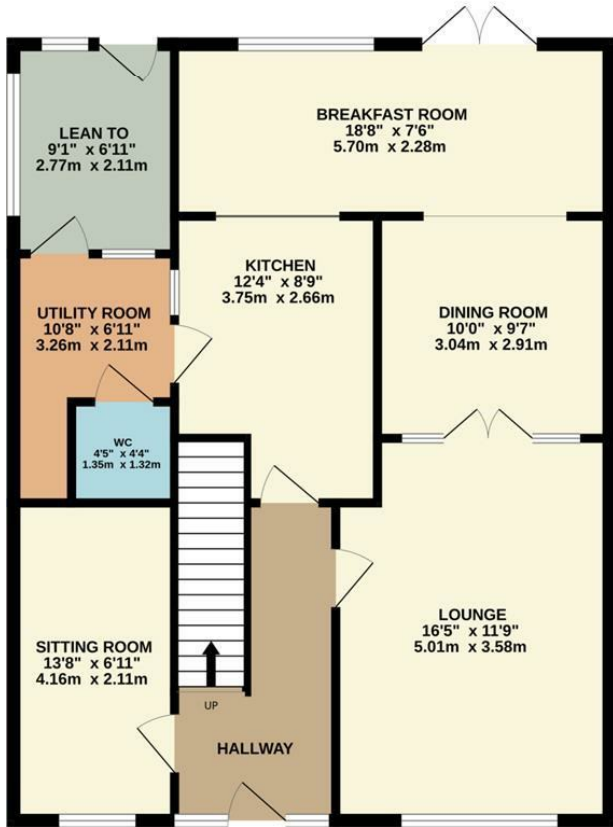
**BED 4**

**BED 5**

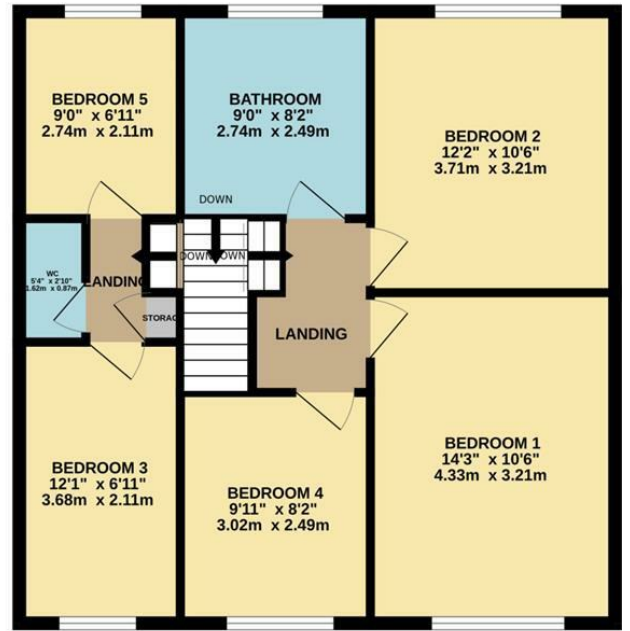
**FAMILY BATHROOM**

**GARAGE**

GROUND FLOOR  
856 sq.ft. (79.6 sq.m.) approx.

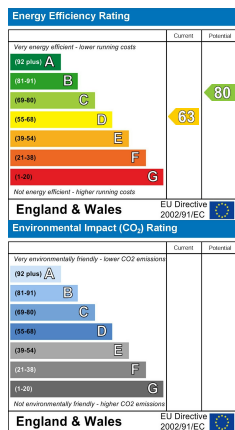


1ST FLOOR  
676 sq.ft. (62.8 sq.m.) approx.



TOTAL FLOOR AREA : 1532 sq.ft. (142.3 sq.m.) approx.

Whilst every attempt has been made to ensure the accuracy of the floorplan contained here, measurements of doors, windows, rooms and any other items are approximate and no responsibility is taken for any error, omission or mis-statement. This plan is for illustrative purposes only and should be used as such by any prospective purchaser. The services, systems and appliances shown have not been tested and no guarantee as to their operability or efficiency can be given.  
Made with Metropix ©2025



Under the Property Misdescriptions Act 1991 we make every effort to ensure our sales details are accurate but they are a general outline and do not constitute any part of an offer or contract. Any services, equipment and fittings have not been tested and no warranty can be given as to their condition. We strongly recommend that all the information provided be verified by your advisors and in particular, measurements required for a specific purpose such as fitted furniture or carpets. Please tell us if you have any problems and members of our branches will help either over the phone or in person. A copy of our complaints procedure is available on request. The details are issued on the strict understanding that any negotiations in respect of the property named herein are conducted through Aspire Estate Agents.